

How to become a Chartered Engineer

by J. B. Muller
Coordinator,
Mass Communications
and Information
Institution of Engineers,
Sri Lanka

A Chartered Engineer is a person almost at the apex of his or her engineering career because the next step is at the top as Fellow of the institution of Engineers, usually designated with the acronym, FIE. To attain to this status means and implies, per se, corporate membership in a professional engineering institution and superior engineering experience. However, this is not about Fellows but about how to become a Chartered Engineer or C. Eng.

First, let us find out exactly who and what a Chartered Engineer is. The IESL defines a Chartered Engineer as 'a person capable of assuming personal professional responsibility for the analysis and application of engineering principles to the solution of problems arising in the fundamental processes of investigation, planning, design, construction, operation and maintenance of engineering works or plant or in research and in engineering education and who is able to communicate his or her ideas clearly, concisely and intelligibly to others. His or her work requires the exercise of original thought and judgment and the ability to supervise the technical and managerial work of others'.

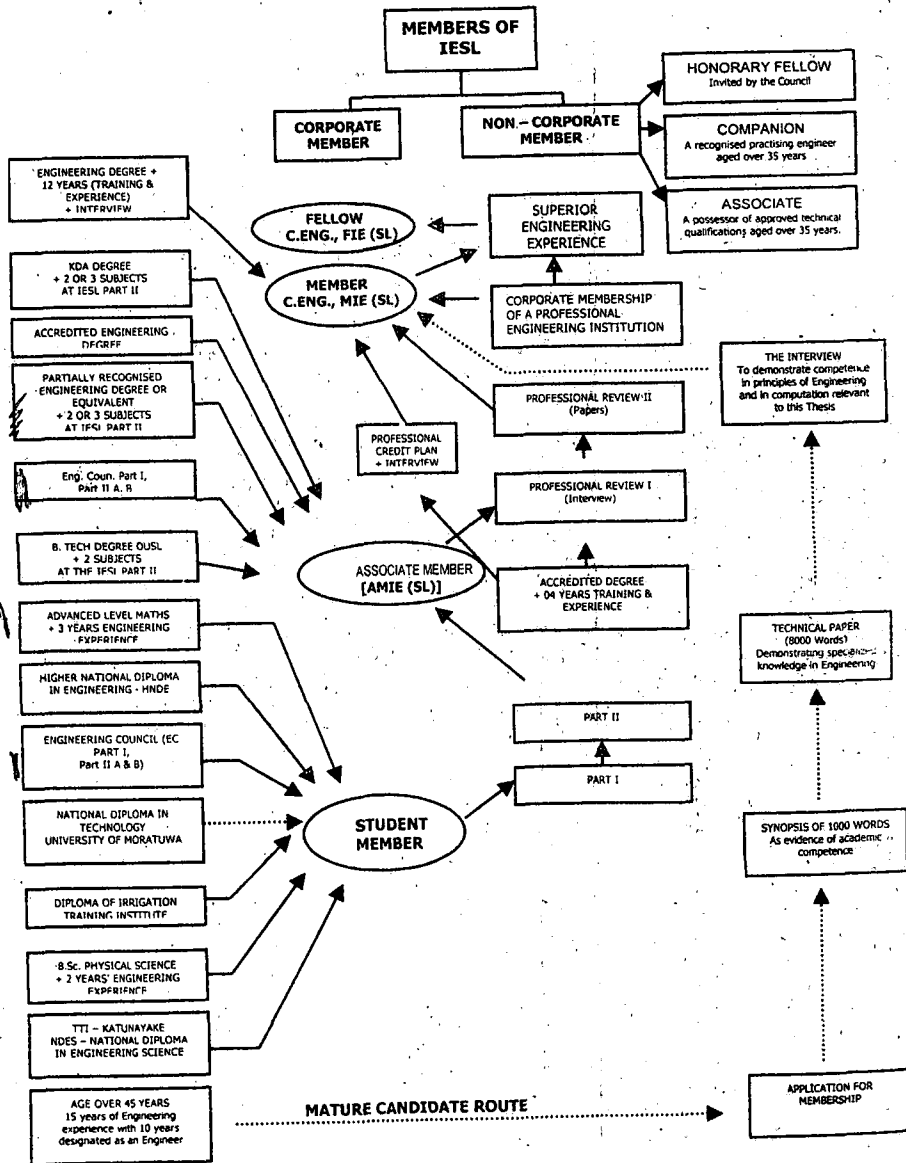
Now, that is a tall order and it requires exceptional intelligence and ability to become such a person because not only technical skill or expertise is involved, character is, too. As the IESL tirelessly keeps on emphasizing, the engineer (or potential engineer) shall "at all times so order his/her conducts as to uphold the dignity and reputation of his/her profession and safeguard the Public Interest matters of safety and health and otherwise". It goes on to state that "he/she shall exercise his/her professional skill and judgment to the best of his/her ability and discharge his/her professional

responsibilities with Integrity". Therefore, we shall assume that the aspirant to the profession is a person of good character based on universally accepted values that uphold integrity.

There are several accepted 'routes' if one wants to become a Chartered Engineer. The chart shows three distinct and different routes depending on academic or academic plus experience antecedents. However, the council of the IESL has amended this to include a new category. Those who have passed their 'A' levels with Double Maths, Physics and English. This additional category could become student members in order to study for and take Parts I, II, and III of the new syllabi. Passing these examinations qualifies the successful candidates to be admitted to the venerable Institution of Engineers as an Associate Member, that is, he or she is now qualified to add the letters 'AMIE (SL)' after their names.

Whilst obtaining gainful employment as junior-grade engineer, the aspiring young candidate could present him/herself for the first Professional Review which consists of an interview by senior engineers who ask searching questions. The next step is the Second Professional Review that consists of sitting for an examination. It is made up of Parts A and B in which there are a choice of questions to which answers have to be written. A knowledge of English is essential to complete these parts, which, if done successfully, means that one attends a grand convocation and induction ceremony wherein the successful candidates, gowned in black cloaks, are admitted as Chartered Engineers. Thereafter, they can use the letters "C.Eng., MIE (SL)" after their names. These letters mean: 'Chartered Engineer, Member of the institution of Engineers (Sri Lanka), and they add lustre to any name, distinguishing the person as professional of the highest calibre, and, by implication of distinguishing integrity, too. Without saying as much, it also means that the

The routes to professional engineer status



individuals is now looked up to by the entire community as a leader, a reliable person who could be depended upon to do his or her duty without flinching in the face of adversity. That is a tremendous distinction for any person to achieve!

From the time a student becomes an associate member, he or she is entitled to participate in the Institution's Continuing Professional Development courses.

This is done in order to broaden his/her foundation by acquiring additional knowledge, understanding and skills in a number of areas, most notably Information Technol-

ogy, Management, Accounting, Evaluating Tenders, Contract Arbitration, and so on. These programmes initiated and sustained by the Institution, help engineers keep abreast of developments, updating everything learned on a continuing basis. (Why, indeed, why, be second to anyone?)

Becoming a Chartered

Engineer is neither easy nor hard.

There's structured way of several paths to accomplish that goal and what it takes is perseverance and character (and good grades at 'A' level) to get there, and any parent would be proud of his or her offspring becoming a valued (and invaluable) members of society.